

VOGO/GOI

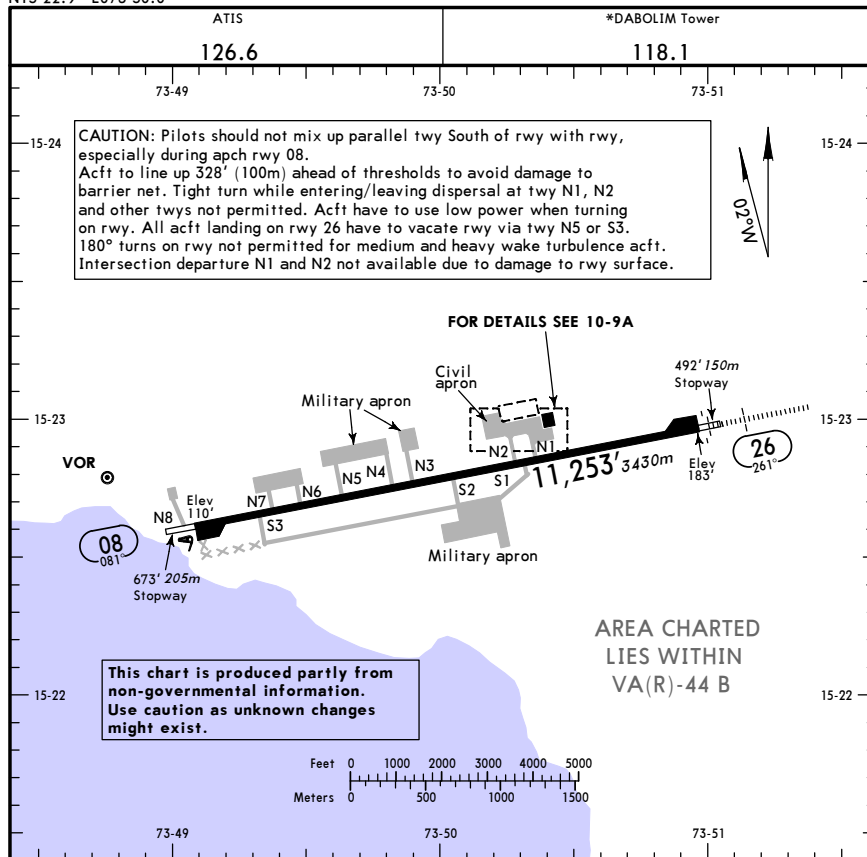
Apt Elev 150'
N15 22.9 E073 50.0

JEPPESEN

27 JUL 12 (10-9)

GOA, INDIA

DABOLIM



ADDITIONAL RUNWAY INFORMATION					
RWY		USABLE LENGTHS		TAKE-OFF	WIDTH
		Threshold	Landing Beyond Glide Slope		
08	HIRL PAPI (angle 3.1°)				148'
26	HIRL ALSF-I PAPI (angle 3.1°)		10,147' 3093m		45m

TAKE-OFF	
DAY: RL or RCLM NIGHT: RL or CL & Rwy End Lights	Adequate Visual Reference (DAY only)
400m	500m

1 Pilot is able to continuously identify the take-off surface and maintain directional control.

CHANGES: Note.

© JEPPESEN, 2002, 2012. ALL RIGHTS RESERVED.

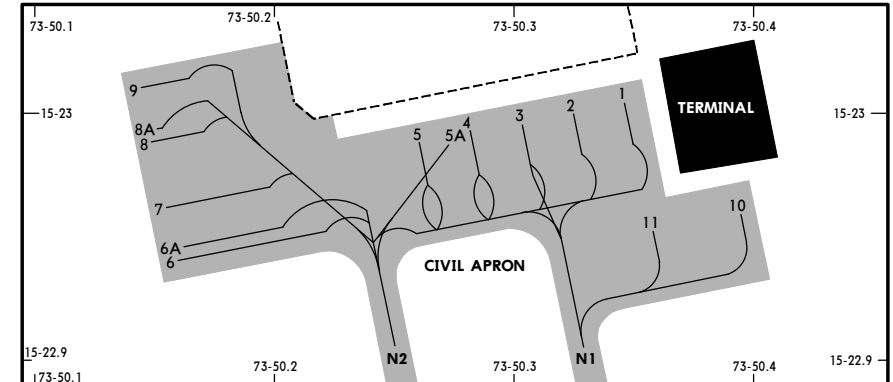
VOGO/GOI

27 JUL 12 (10-9A)

JEPPESEN

GOA, INDIA

DABOLIM



INS COORDINATES	
STAND No.	COORDINATES
1 thru 5A	N15 23.0 E073 50.3
6, 6A	N15 22.9 E073 50.2
7	N15 23.0 E073 50.2
8, 8A, 9	N15 23.0 E073 50.1
10, 11	N15 23.0 E073 50.4

Entry to stands 1 thru 5 via twy N1 or N2.
Entry to stands 5A thru 9 via twy N2.
Entry to stands 10 and 11 via twy N1.
Exit from stands 1, 2, 10 and 11 via twy N1.
Exit from stands 3 thru 5 via twy N1 or N2.
Exit from stands 5A thru 9 via twy N2.
Stands 1 thru 9 push-back required.

CHANGES: None.

© JEPPESEN, 2010, 2011. ALL RIGHTS RESERVED.

STRAIGHT-IN RWY		A	B	C	D
08	VOR DME ❶	600'(490') C2400m	600'(490') C2400m	600'(490') C2800m	600'(490') C3600m
	VOR	700'(590') C2900m	700'(590') C2900m	700'(590') C3600m	700'(590') C4000m
26	ILS	561'(378') R1600m	561'(378') R1600m	561'(378') R1600m	561'(378') R1600m
	ALS out	R2000m	R2000m	R2000m	R2000m
	LOC ❶	650'(467') R2000m	650'(467') R2000m	650'(467') C2400m	650'(467') C3200m
	ALS out	C2400m	C2400m	C2800m	C3600m
	VOR DME ❶	650'(467') R2000m	650'(467') R2000m	650'(467') C2400m	650'(467') C3200m
	ALS out	C2400m	C2400m	C2800m	C3600m
	VOR	700'(517') C2200m	700'(517') C2200m	700'(517') C2800m	700'(517') C3600m
	ALS out	C2600m	C2600m	C3200m	C4000m

❶ Continuous Descent Final Approach.

CIRCLE-TO-LAND	100 KT	135 KT	180 KT	205 KT
Prohibited North of rwy	700'(550') ❷ V3600m	700'(550') ❷ V3600m	1050'(900') V4800m	1050'(900') V5000m

❷ or higher minimums of preceding straight-in approach.

TAKE-OFF RWY 08, 26

DAY: RL or RCLM NIGHT: RL or CL & Rwy End Lights		❸ Adequate Visual Reference (DAY only)
A	400m	500m
B		
C		
D		

❸ Pilot is able to continuously identify the take-off surface and maintain directional control.

Applicable to all operators not approved by DGCA India for lower minimums.					
STRAIGHT-IN RWY		A	B	C	D
08	VOR DME ❶	700'(590') C2800m	700'(590') C2800m	700'(590') C3200m	700'(590') C4000m
	VOR	800'(690') C3000m	800'(690') C3000m	800'(690') C4000m	800'(690') C4400m
26	ILS	661'(478') C2200m	661'(478') C2200m	611'(428') R1900m	611'(428') R1900m
	ALS out	C2600m	C2600m	C2300m	C2300m
	LOC ❶	750'(567') C2400m	750'(567') C2400m	750'(567') C2800m	750'(567') C3600m
	ALS out	C2800m	C2800m	C3200m	C4000m
	VOR DME ❶	750'(567') C2400m	750'(567') C2400m	750'(567') C2800m	750'(567') C3600m
	ALS out	C2800m	C2800m	C3200m	C4000m
	VOR	800'(617') C2600m	800'(617') C2600m	800'(617') C3200m	800'(617') C4000m
	ALS out	C3000m	C3000m	C3600m	C4400m

❶ Continous Descent Final Approach.

CIRCLE-TO-LAND	100 KT	135 KT	180 KT	205 KT
Prohibited North of rwy	800'(650') V3600m	800'(650') V3600m	1150'(1000') V4800m	1150'(1000') V5000m

TAKE-OFF RWY 08, 26

DAY: RL or RCLM NIGHT: RL or CL & Rwy End Lights		❷ Adequate Visual Reference (DAY only)
A	800m	900m
B		
C		
D		

❷ Pilot is able to continuously identify the take-off surface and maintain directional control.

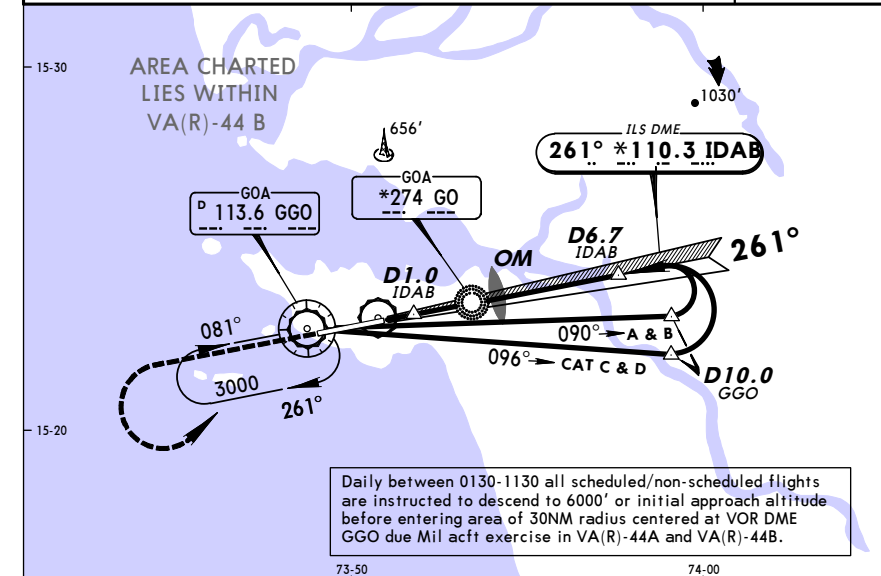
VOGO/GOI
DABOLIM

2 DEC 11
Eff 15 Dec

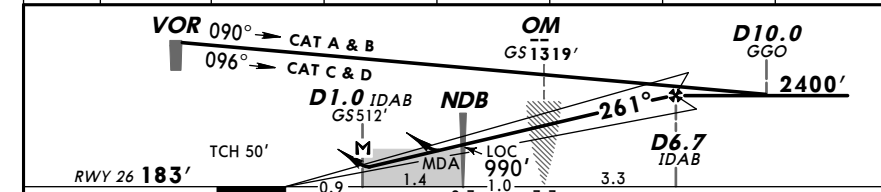
11-1

GOA, INDIA
VOR DME ILS DME Rwy 26

ATIS		*DABOLIM Approach		*DABOLIM Tower	
126.6		119.7		118.1	
LOC IDAB *110.3	Final Apch Crs 261°	GS OM 1319' (1136')	ILS DA(H) 561' (378')	Apt Elev 150'	RWY 183'
MISSED APCH: Climb STRAIGHT AHEAD to 2000', then turn LEFT climbing to 3000' to join VOR holding, or as directed.					2000' 4500' 360'
Alt Set: hPa		Rwy Elev: 7 hPa	Trans level: By ATC	Trans alt: 5500'	MSA GGO VOR
Procedure restricted to MAX 185 KT.					



LOC (GS out)	IDAB DME	2.0	3.0	4.0	5.0	6.0	6.7
ALTITUDE		840'	1170'	1500'	1830'	2160'	2400'



Gnd speed-Kts	70	90	100	120	140	160	ALSF-I	2000'
ILS GS or LOC Descent angle 3.10°	384	494	548	658	768	878	PAPI	PAPI
MAP at D1.0 IDAB								

STRAIGHT-IN LANDING RWY 26				CIRCLE-TO-LAND			
ILS		LOC (GS out)		LOC (GS out)		CDFA	
DA(H) 561' (378')		CDFA		MDA(H) 650' (467')		Prohibited North of rwy	
FULL		ALS out		ALS out		Max Kts	
						100	700' (550') 3600m
						135	
						180	1050' (900') 4800m
						205	1050' (900') 5000m

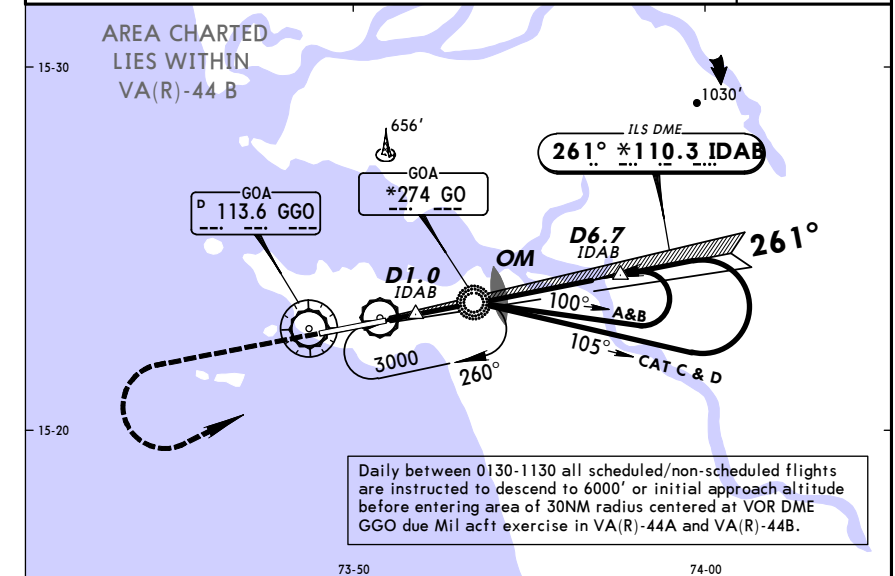
VOGO/GOI
DABOLIM

2 DEC 11
Eff 15 Dec

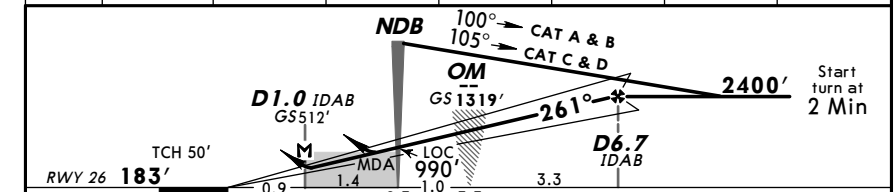
11-2

GOA, INDIA
NDB ILS DME Rwy 26

ATIS		*DABOLIM Approach		*DABOLIM Tower	
126.6		119.7		118.1	
LOC IDAB *110.3	Final Apch Crs 261°	GS OM 1319' (1136')	ILS DA(H) 561' (378')	Apt Elev 150'	RWY 183'
MISSED APCH: Climb STRAIGHT AHEAD to 2000', then turn LEFT climbing to 3000' to join NDB holding, or as directed.					2000' 4500' 360'
Alt Set: hPa		Rwy Elev: 7 hPa	Trans level: By ATC	Trans alt: 5500'	MSA GO NDB
Procedure restricted to MAX 185 KT.					



LOC (GS out)	IDAB DME	2.0	3.0	4.0	5.0	6.0	6.7
ALTITUDE		840'	1170'	1500'	1830'	2160'	2400'



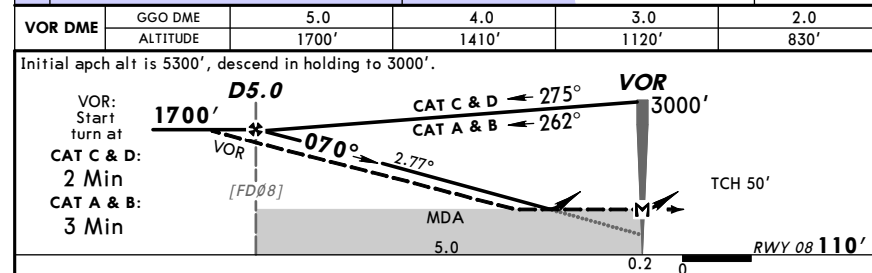
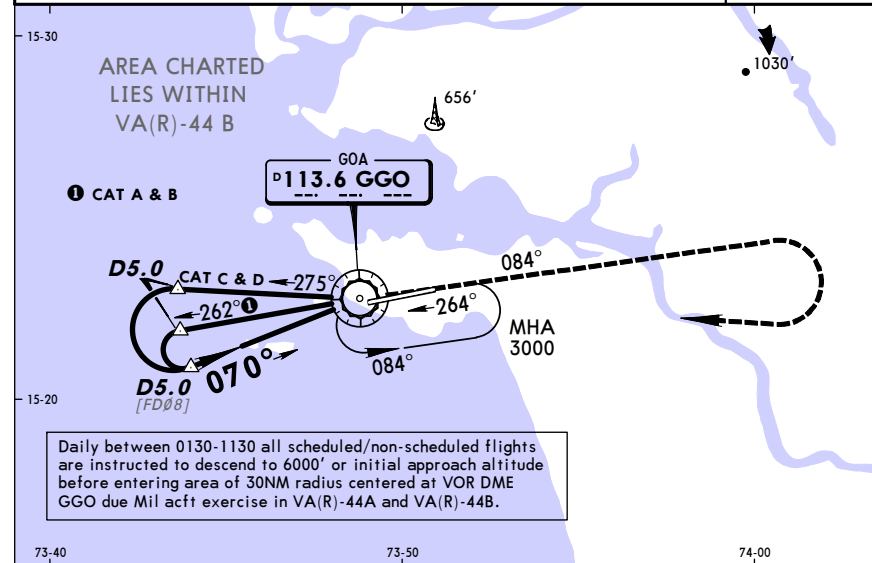
Gnd speed-Kts	70	90	100	120	140	160	ALSF-I	2000'
ILS GS or LOC Descent angle 3.10°	384	494	548	658	768	878	PAPI	PAPI
MAP at D1.0 IDAB								

STRAIGHT-IN LANDING RWY 26				CIRCLE-TO-LAND			
ILS		LOC (GS out)		LOC (GS out)		CDFA	
DA(H) 561' (378')		CDFA		MDA(H) 650' (467')		Prohibited North of rwy	
FULL		ALS out		ALS out		Max Kts	
						100	700' (550') 3600m
						135	
						180	1050' (900') 4800m
						205	1050' (900') 5000m

VOGO/GOI
DABOLIM

21 SEP 12 (13-1) VOR DME or VOR Rwy 08

ATIS		*DABOLIM Approach		*DABOLIM Tower	
126.6		119.7		118.1	
VOR GGO 113.6	Final Apch Crs 070°	VOR DME Minimum Alt D5.0 1700' (1590')	VOR DME MDA(H) 600' (490')	Apt Elev 150'	RWY 110'
		VOR Minimum Alt No FAF	VOR MDA(H) 700' (590')		
MISSED APCH: Climb on 084° to 3000', then turn RIGHT to VOR, or as directed.					2000' 4500' 360' MSA GGO VOR
Alt Set: hPa	Rwy Elev: 4 hPa	Trans level: By ATC	Trans alt: 5500'		



Gnd speed-Kts	70	90	100	120	140	160
VOR DME: Descent angle 2.77°	343	441	490	588	686	784
MAP at VOR						

STRAIGHT-IN LANDING RWY 08		CIRCLE-TO-LAND	
VOR DME CDFA MDA(H) 600' (490')	VOR non-CDFA MDA(H) 700' (590')	Prohibited North of rwy	
A	CMV 2400m	Max Kts 100	MDA(H) 700' (550') VIS 3600m
B	CMV 2800m	135	
C	CMV 3200m	180	
D	CMV 3600m	205	

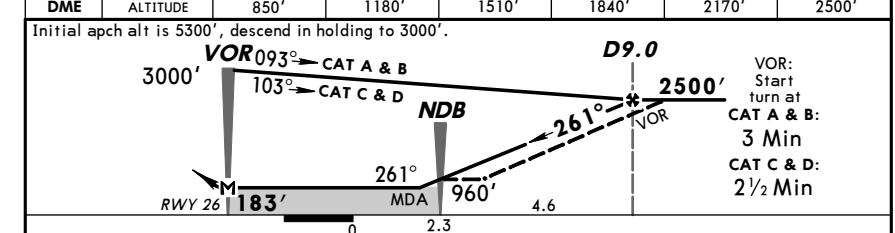
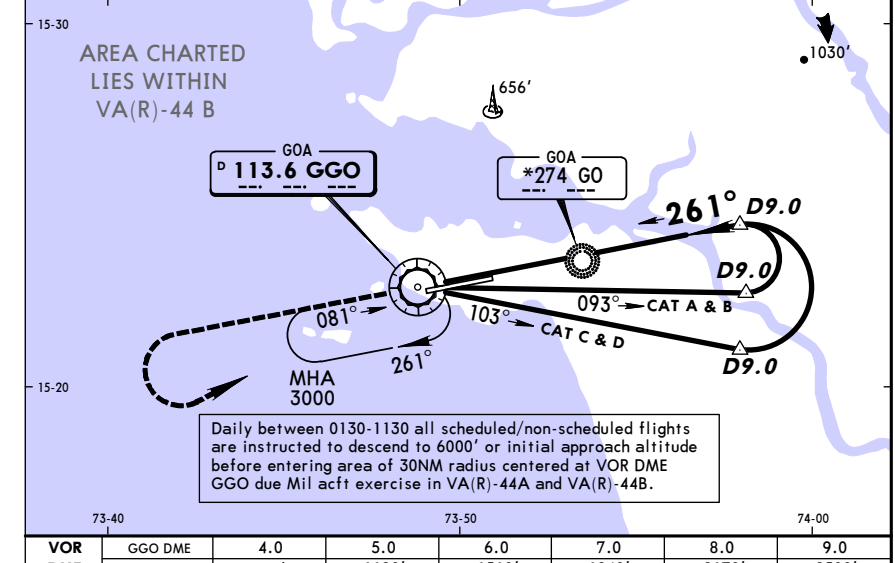
CHANGES: None.

© JEPPesen, 1998, 2011. ALL RIGHTS RESERVED.

VOGO/GOI
DABOLIM

21 SEP 12 (13-2) VOR DME or VOR Rwy 26

ATIS		*DABOLIM Approach		*DABOLIM Tower	
126.6		119.7		118.1	
VOR GGO 113.6	Final Apch Crs 261°	VOR DME Minimum Alt D9.0 2500' (2317')	VOR DME MDA(H) 650' (467')	Apt Elev 150'	RWY 183'
		VOR Minimum Alt No FAF	VOR MDA(H) 700' (517')		
MISSED APCH: Climb STRAIGHT AHEAD to 2000', then turn LEFT climbing to 3000' to join VOR holding, or as directed.					2000' 4500' 360' MSA GGO VOR
Alt Set: hPa	Rwy Elev: 7 hPa	Trans level: By ATC	Trans alt: 5500'		



Gnd speed-Kts	70	90	100	120	140	160
Descent Angle 3.10°	384	494	548	658	768	878
MAP at VOR						

STRAIGHT-IN LANDING RWY 26				CIRCLE-TO-LAND	
VOR DME CDFA MDA(H) 650' (467')	VOR non-CDFA MDA(H) 700' (517')	Max Kts	MDA(H)	Prohibited North of rwy	
A	ALS out	100			
B	CMV 2400m	135	700' (550')	3600m	
C	CMV 2800m	180	1050' (900')	4800m	
D	CMV 3200m	205	1050' (900')	5000m	

CHANGES: Procedure.

© JEPPesen, 1998, 2012. ALL RIGHTS RESERVED.